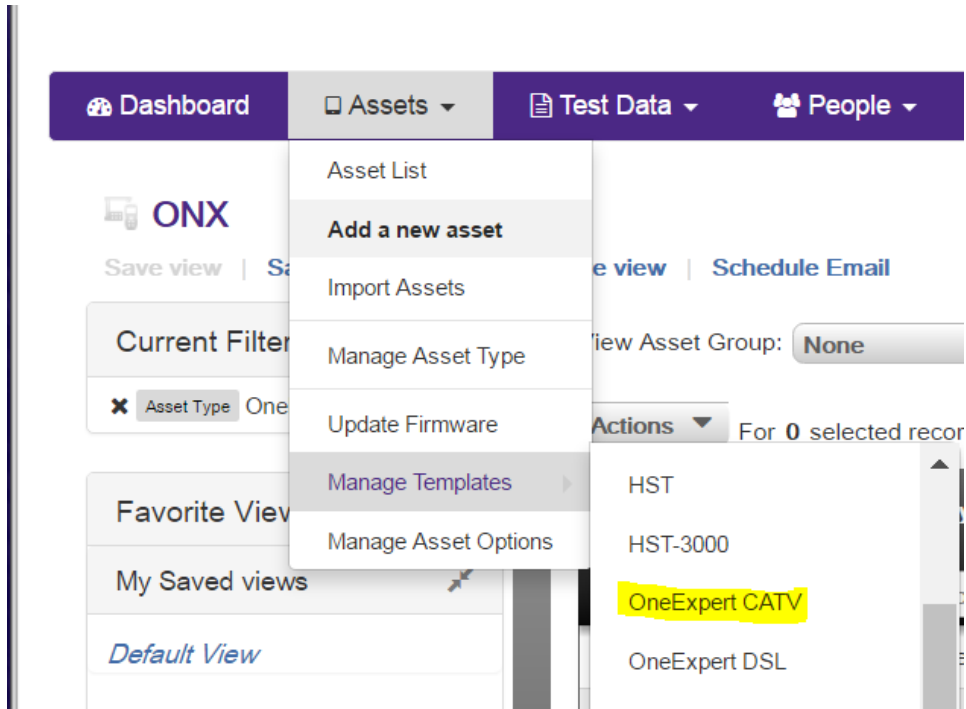


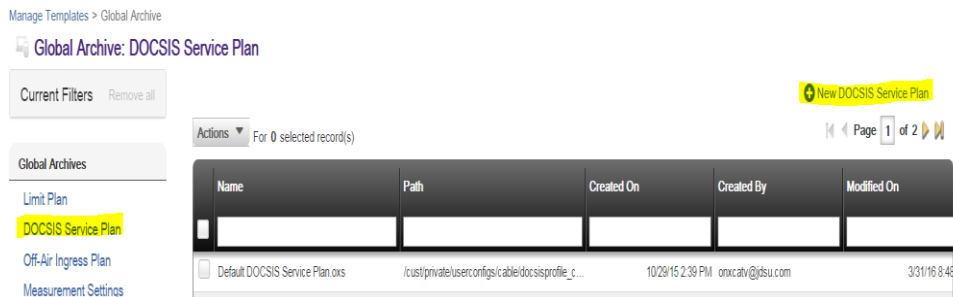
## How to create a new DOCSIS template for the ONX-CATV unit

### Part I - In StrataSync

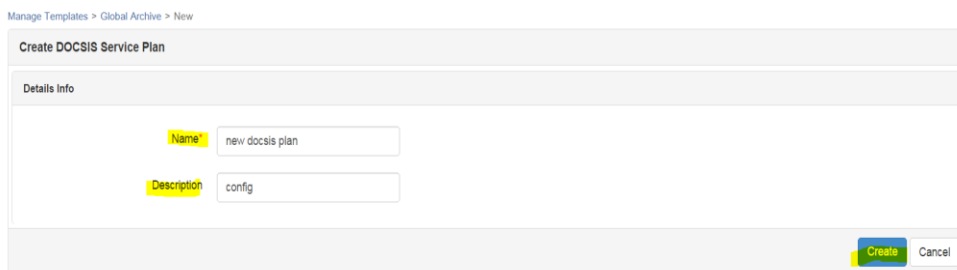
1. Log into your StrataSync Account
2. Click on Assets -> Manage Templates -> OneExpert CATV



3. Click on DOCSIS Service Plan -> New DOCSIS Service Plan



4. In the next windows dialog -> give the template a new unique name and a brief description (optional) -> then click on create



- Make the necessary changes that fit your CMTS (DOCSIS 3.1 or DOCSIS 3.0), your Downstream and Upstream Throughput URLs, and other Settings.

Manage Templates > Global Archive > New

### DOCSIS Service Plan

CM MAC 1    CM MAC 2    CM MAC 3    CM MAC 4    CM MAC 5

**General Info**

Enabled

Label

Type

DOCSIS Emulation Type

DOCSIS 3.0 Certificate Type

Downstream Throughput URL

Upstream Throughput URL

VoIPCheck Server

- Click on Save.
- Then back in the Manage Template screen -> search for your New DOCSIS Service Plan and left click on the little squared box next to its name to select it.

Global Archive: DOCSIS Service Plan

Current Filters Remove all

Global Archives

- Limit Plan
- DOCSIS Service Plan
- Off-Air Ingress Plan
- Measurement Settings

Actions For 1 selected record(s)

Name	Path	Created On	Created By
<input type="checkbox"/> Default DOCSIS Service Plan.oxs	/cust/private/userconfigs/cable/docsisprofile_c...	10/29/15 2:39 PM	onxc:atv@jdsi
<input checked="" type="checkbox"/> New DOCSIS Service Plan.oxs	/cust/private/userconfigs/cable/docsisprofile_c...	4/18/16 12:10 PM	tac@jdsi.com

- Right Click on the selected template -> then click on Deploy

<input type="checkbox"/>	Default DOCSIS Service Plan.oxs	/cust/priv...
<input checked="" type="checkbox"/>	New DOCSIS Service Plan.oxs	/cust/priv...
<input type="checkbox"/>	Throughput test.o...	/cust/priv...
<input type="checkbox"/>	DOCSIS test.oxs	/cust/priv...
<input type="checkbox"/>	MDTAC.oxs	/cust/priv...
<input type="checkbox"/>	new.oxs	/cust/priv...
<input type="checkbox"/>	NewPlan.oxs	/cust/priv...

View

Edit

Rename

---

**Deploy**

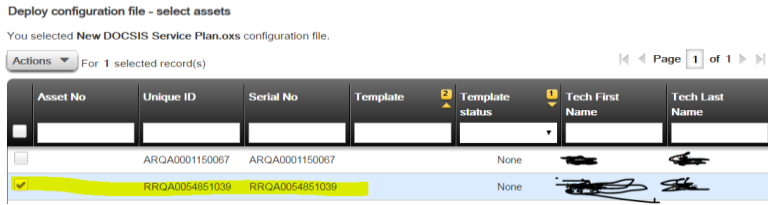
---

Copy To Template

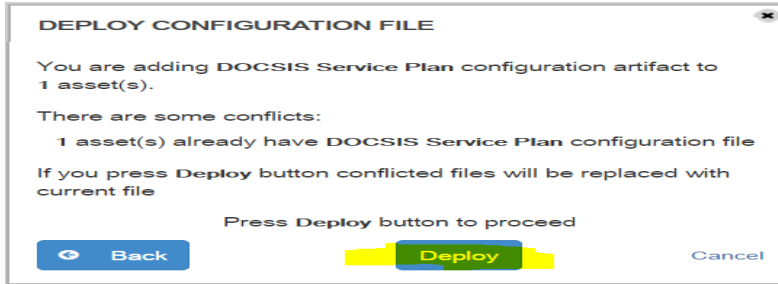
---

Delete

- Select the unit(s) that you want to send this new template to and then click on next



- Click on Deploy to confirm sending this new template to the selected unit(s).

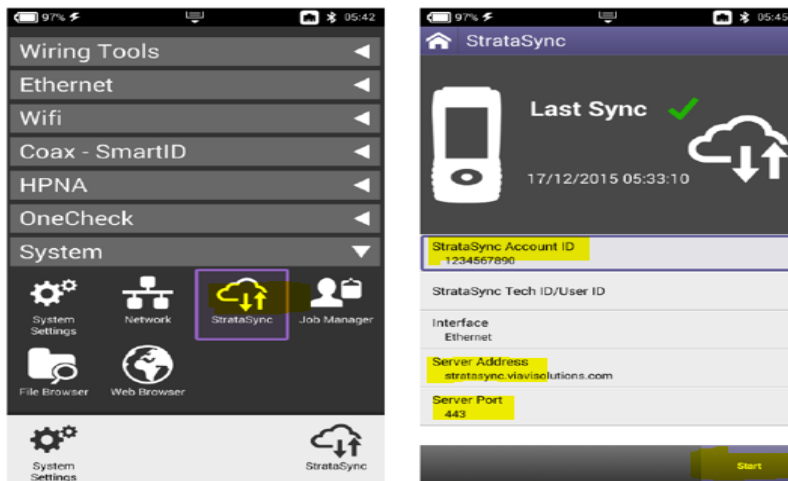


- You will see a green status bar after the template has been successfully deployed.

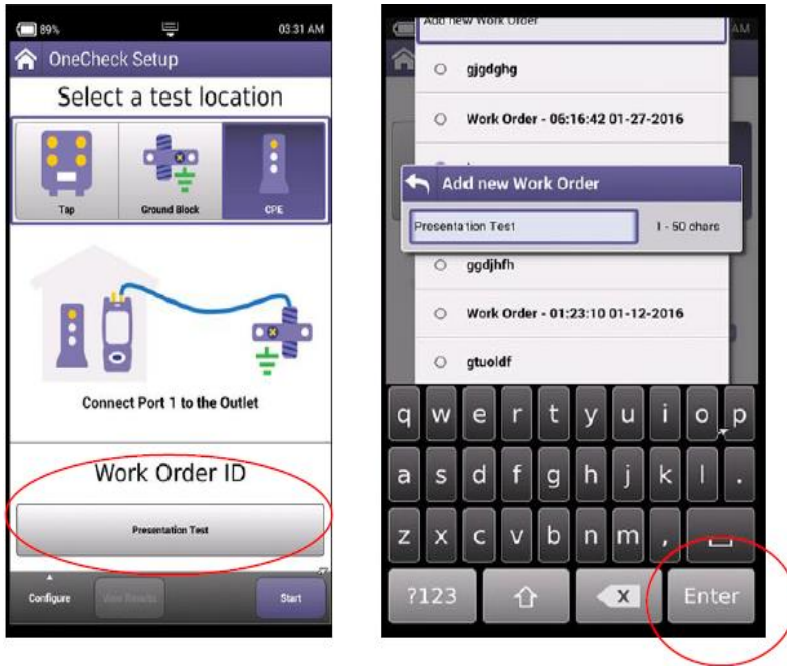


## Part II - In your physical ONX-CATV Meter

- Turn on your ONX-CATV unit
- Connect unit to an Ethernet Connection
- Go to System -> Network and verify network is up
- Go to System -> StrataSync
- Verify StrataSync Account ID is loaded
- Press "Start"



18. Wait until you get a Sync was Successful message and tap on OK.
19. Scroll up to CATV
20. Select OneCheck, DOCSIS Check, other test -> Tap on Work Order ID -> Create New Work Order -> Give it a unique name -> Press Enter



**NOTE:** Creating a new Work Order is necessary in order to use the most recently received template configuration from StrataSync.

## CATV – Technical Support Team