

Viavi OneAdvisor ONA-800 Software Update Instructions



May 1, 2020

Table of Contents

Scope..... 2

1. Network Upgrade 2

2. USB Upgrade.....8

3. Stratasync Upgrade.....13

Scope


The ONA-800 platform base software includes software for the ONA-800 base and all supported modules.

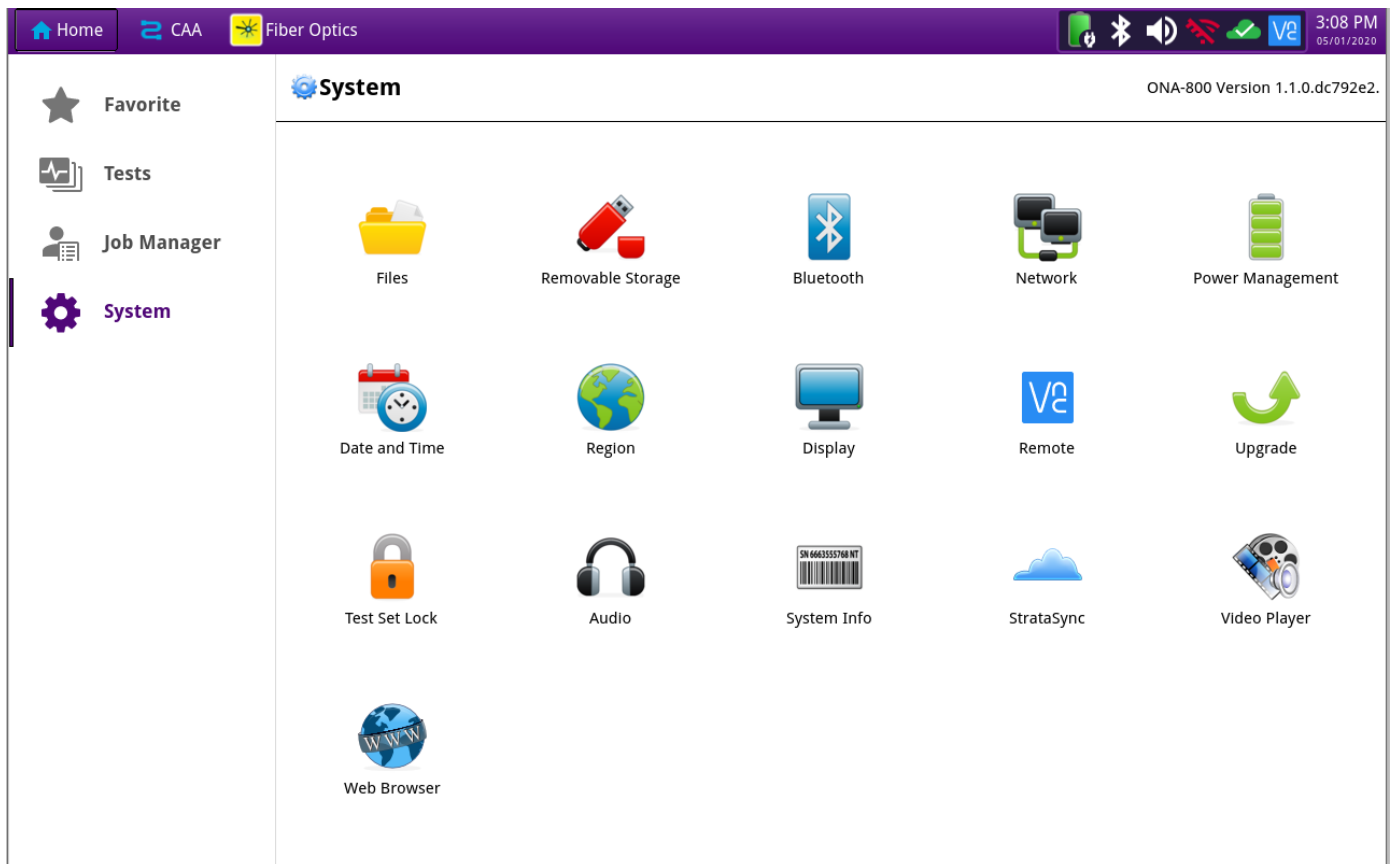
There are three methods to update ONA-800 software:

1. Network upgrade - Use this method to update your ONA-800 via an Internet connection.
2. USB upgrade - Use this method to update your ONA-800 with a USB thumb drive.
3. StrataSync upgrade - Use this method if your ONA-800 is managed using Viavi's StrataSync Asset Management system and your company has elected to deploy software via this method.

The ONA must be connected to AC Power, regardless of update method. Please note that network upgrades are NOT supported over WiFi.

1. Network Upgrade

<i>Step</i>	<i>Action</i>	<i>Details</i>
1.	Power On	Press and release the ON/OFF button to turn on the ONA-800.
2.	AC Power	Connect the AC power adapter to the power connector on the top of the mainframe.
3.	LAN Connection	Connect the Ethernet Management Port, on the top of the mainframe, to a network connection with internet access, using CAT 5E or better cable.
4.	System	Press the System icon,  , at the left of the HOME screen, to display the System Menu.



5. Network Settings



Press the Network icon, *Network*, to display LAN Settings. Set **IP Mode** to “**DHCP**” for automatic IP address assignment or “**Static**” for manual input. If using a static address, be sure to configure the DNS server for an accurate address or the upgrade will fail to locate the upgrade server.

Home CAA Fiber Optics 3:09 PM 05/01/2020


System > Network ONA-800 Version 1.1.0.dc792e2.

LAN Proxy

IPv4
 IP mode: DHCP MAC address: 00:80:16:ED:47:41
 IP address: 10.12.5.11 Subnet mask: 255.255.255.0
 Gateway: 10.12.5.1 DNS server: 10.107.135.50

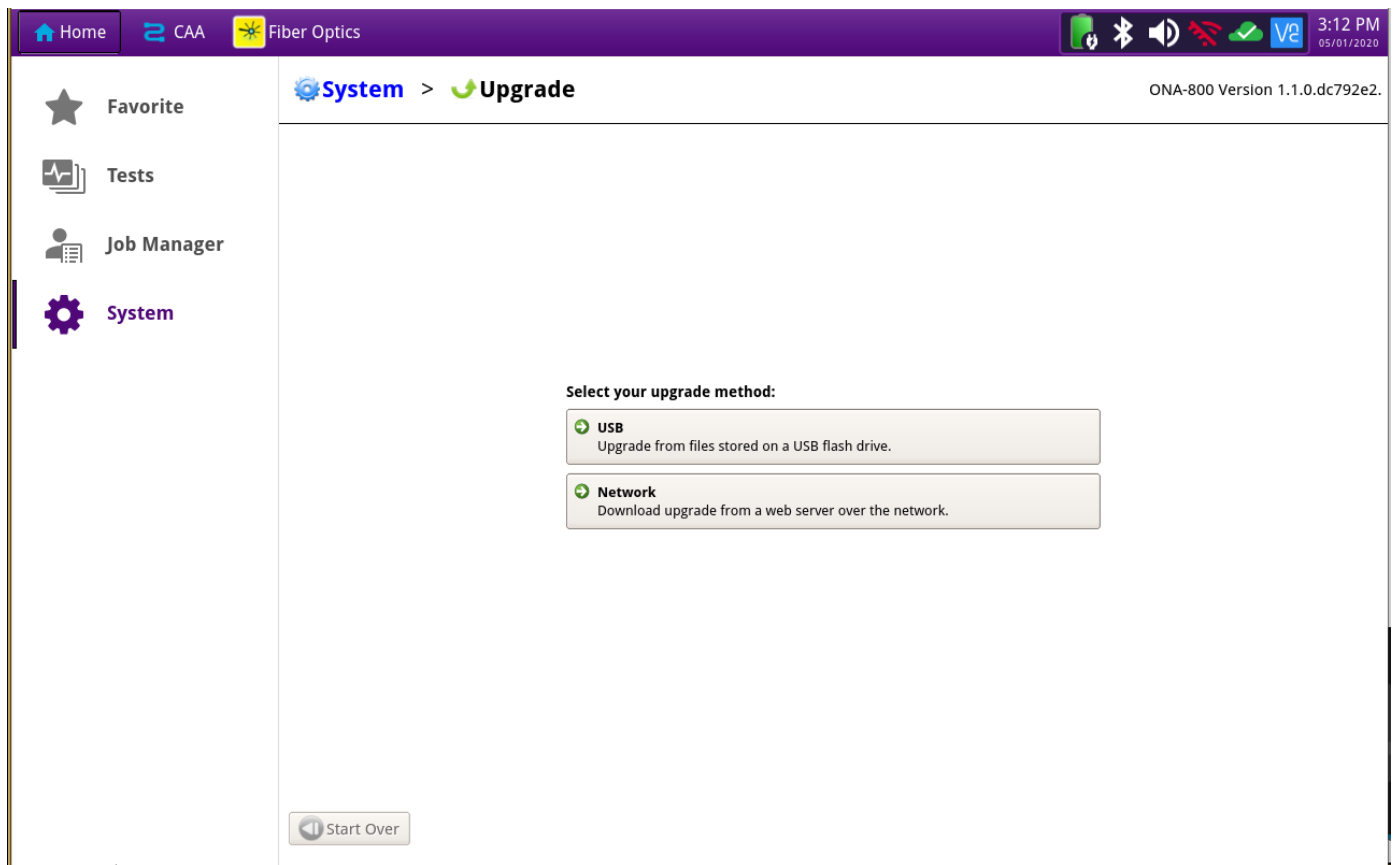
IPv6
 IPv6 mode: Disabled

VLAN
 VLAN ID 100

After configuring LAN settings, press the System icon, , to redisplay the System Menu.

6. Upgrade

Press the Upgrade icon, , to display upgrade methods.



7. Network Upgrade Press  to display upgrade settings. Press Reset to Default to ensure the server address name is correct.

Home CAA Fiber Optics 3:13 PM 05/01/2020

System > Upgrade ONA-800 Version 1.1.0.dc792e2.

Favorite

Tests

Job Manager

System

Enter the address of the upgrade server:

Server address

Enter the address of the proxy server, if needed to access upgrade server:

Proxy address Type

Connect
Query the server for available upgrades.

Start Over Reset to Default

8. Connect

Press



to show

the upgrade versions available at upgrademyunit.net.

System > Upgrade

ONA-800 Version 1.1.0.dc792e2.

Name	Upgrade Version	Date	Installed Version	Date
platform-version	2.1.0-670c1bc.dev	03/11/2020	1.1.0-dc792e2.	04/22/2020

Previous Next Start Upgrade

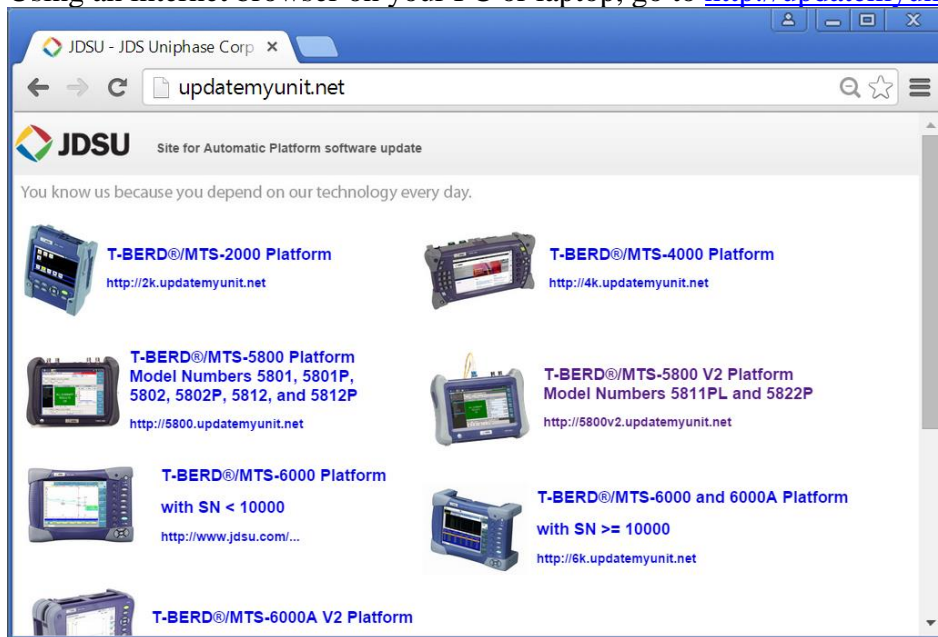
Start Over


9. Start Upgrade Press , and press  to initiate the upgrade.

2. USB Upgrade


Step *Action* *Details*

1. Updatemyunit.net Using an internet browser on your PC or laptop, go to <http://updatemyunit.net/>



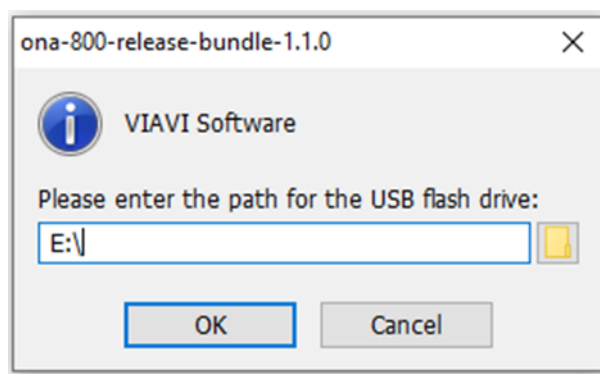
2. ONA-800 Click on the  to display the OneAdvisor ONA-800 upgrade page.


3. Download Click on the icon for the desired server to start the download from that server. There are icons for three servers: EMEA, NORTH AMERICA or APAC

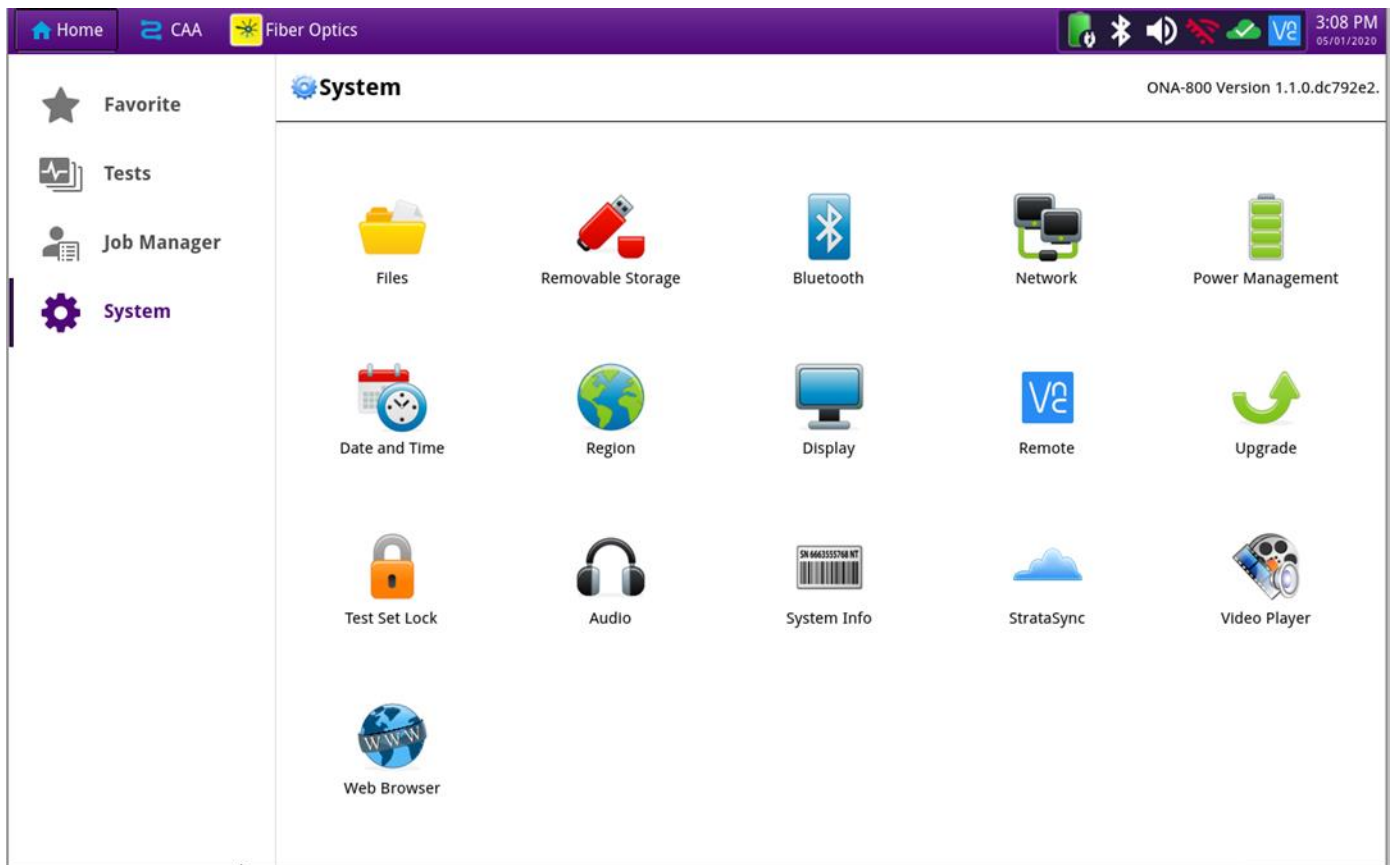
server. For example, North America . Click to download the current software revision from that server, if prompted. Do NOT save the download directly to the USB stick. Save to your PC and wait for the download to complete.


4. USB Stick Insert a USB thumb drive into the USB port on your PC or laptop.

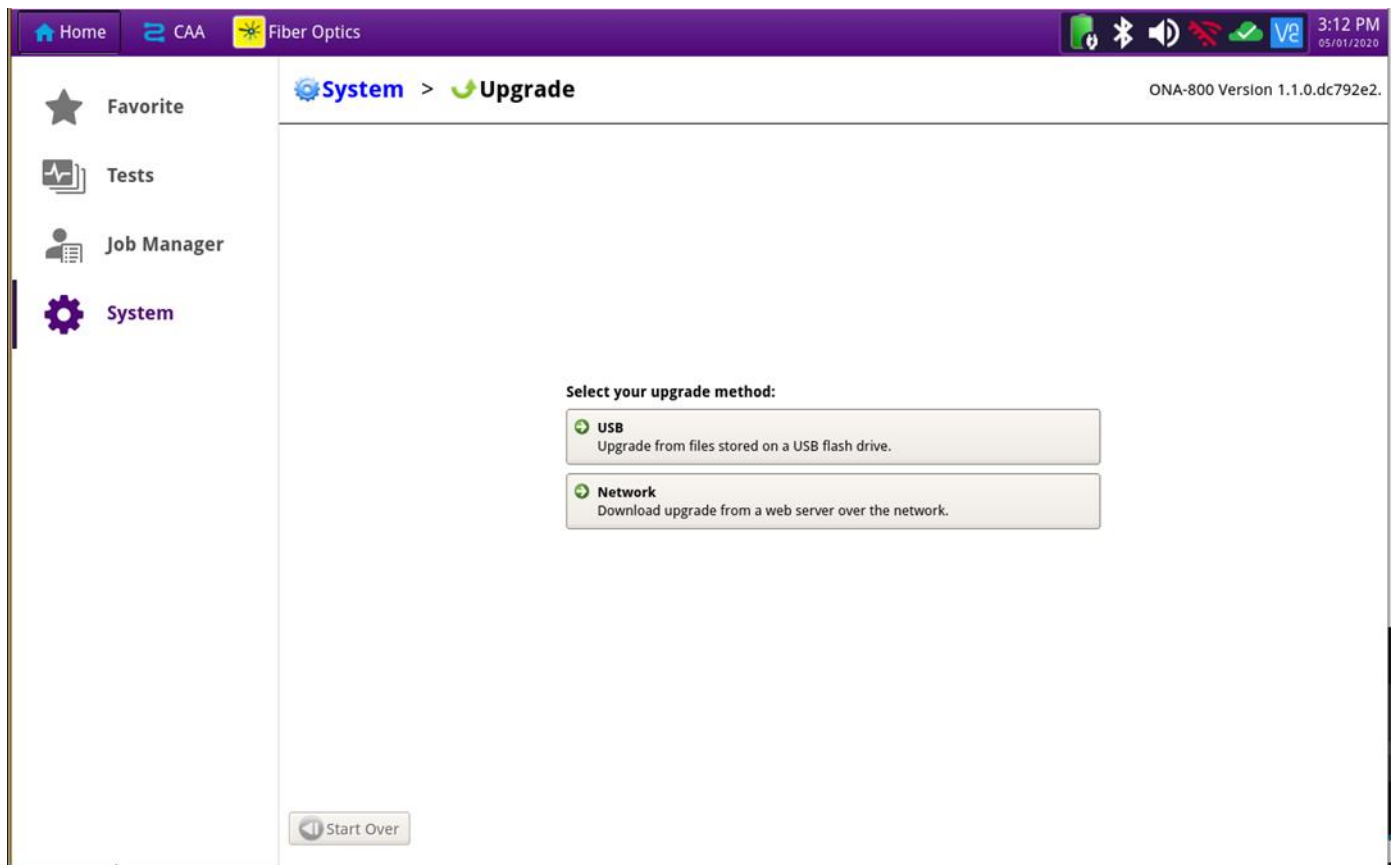
5. Extract Open and run the downloaded file, enter the path of the USB stick, and press to extract files.



6. Eject Once the extract has completed, safely eject the USB drive from your PC or Laptop.
7. Power on ONA Press and release the ON/OFF button to turn on the ONA-800.
8. AC Power Connect the AC power adapter to the power connector on the top of the ONA-800 mainframe.
9. USB Connect the USB Thumb Drive to one of the USB ports on the ONA-800 mainframe. An 8GB or smaller drive is recommended.
10. System Press the System icon, , at the left of the HOME screen, to display the System Menu.



11. Upgrade Press the Upgrade icon,  Upgrade , to display upgrade methods.



12. Select USB

Press



to display upgrade versions available on the USB stick.

The screenshot shows the 'System > Upgrade' page in the Fiber Optics software. The top navigation bar includes 'Home', 'CAA', and 'Fiber Optics'. The left sidebar has 'Favorite', 'Tests', 'Job Manager', and 'System' (selected). The main content area displays a table with the following data:


Name	Upgrade Version	Date	Installed Version	Date
platform-version	2.1.0-670c1bc.dev	03/11/2020	1.1.0-dc792e2.	04/22/2020

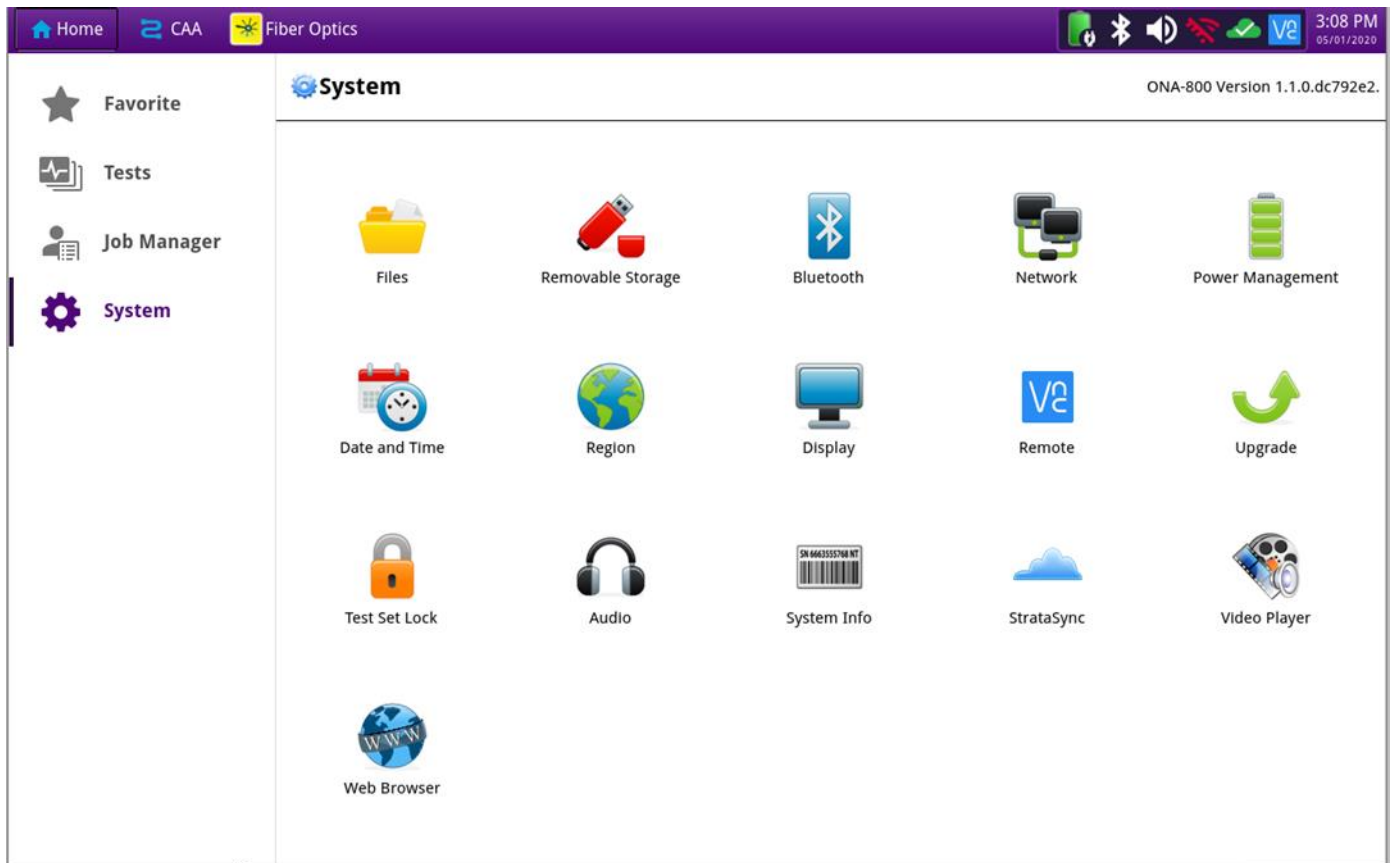
Below the table are buttons for 'Previous', 'Next', and 'Start Upgrade'. At the bottom left, there is a 'Start Over' button.

13. Start Upgrade


Press . Press  to initiate the upgrade.

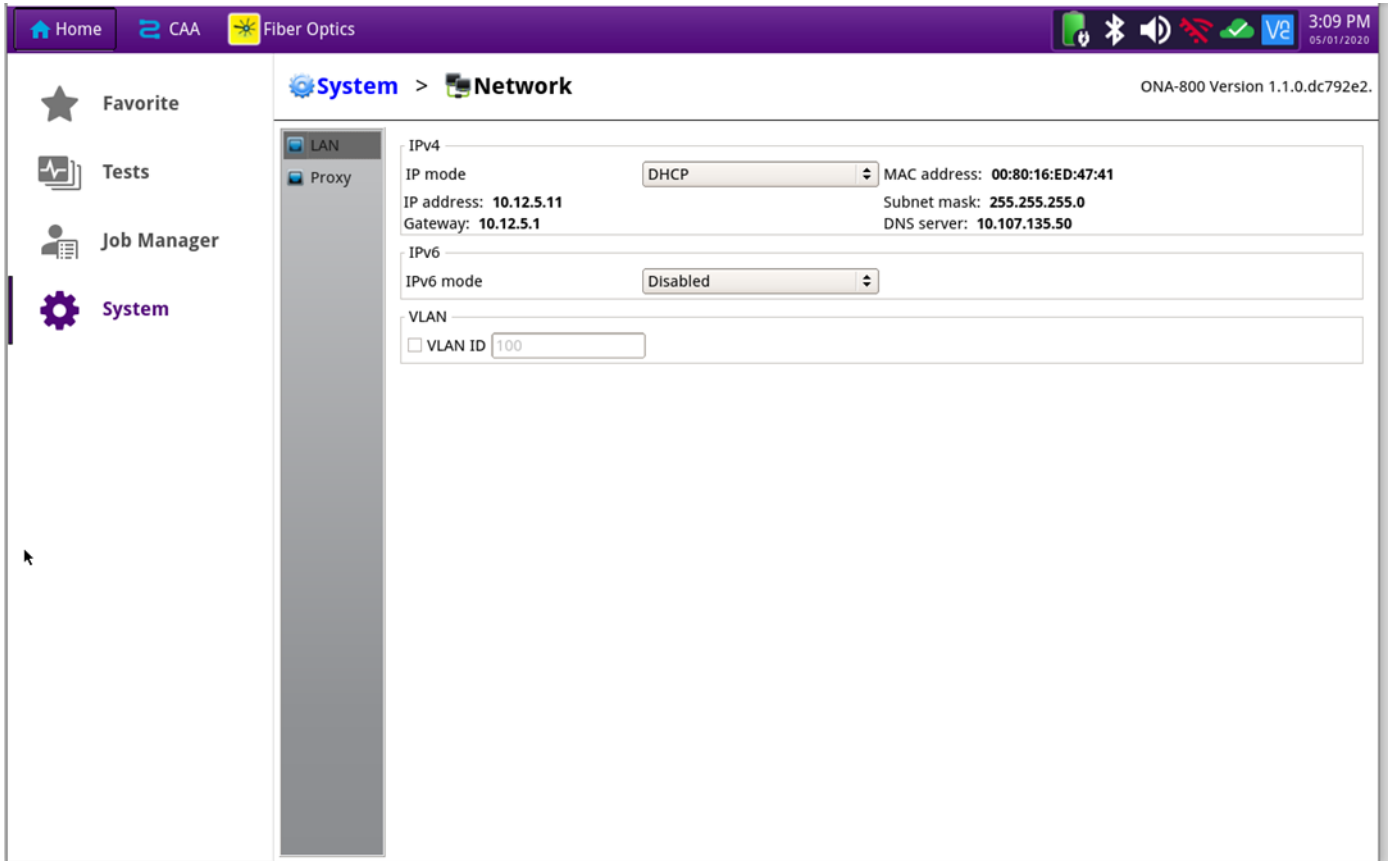
3. StrataSync


<i>Step</i>	<i>Action</i>	<i>Details</i>
1.	Power On	Press and release the ON/OFF button to turn on the ONA-800.
2.	AC Power	Connect the AC power adapter to the power connector on the top of the ONA-800.
3.	LAN Connection	Connect the Ethernet Management Port on the top of ONA-800 to a network connection with internet access, using CAT 5E or better cable.
4.	System	Press the System icon,  , at the left of the HOME screen, to display the System Menu.





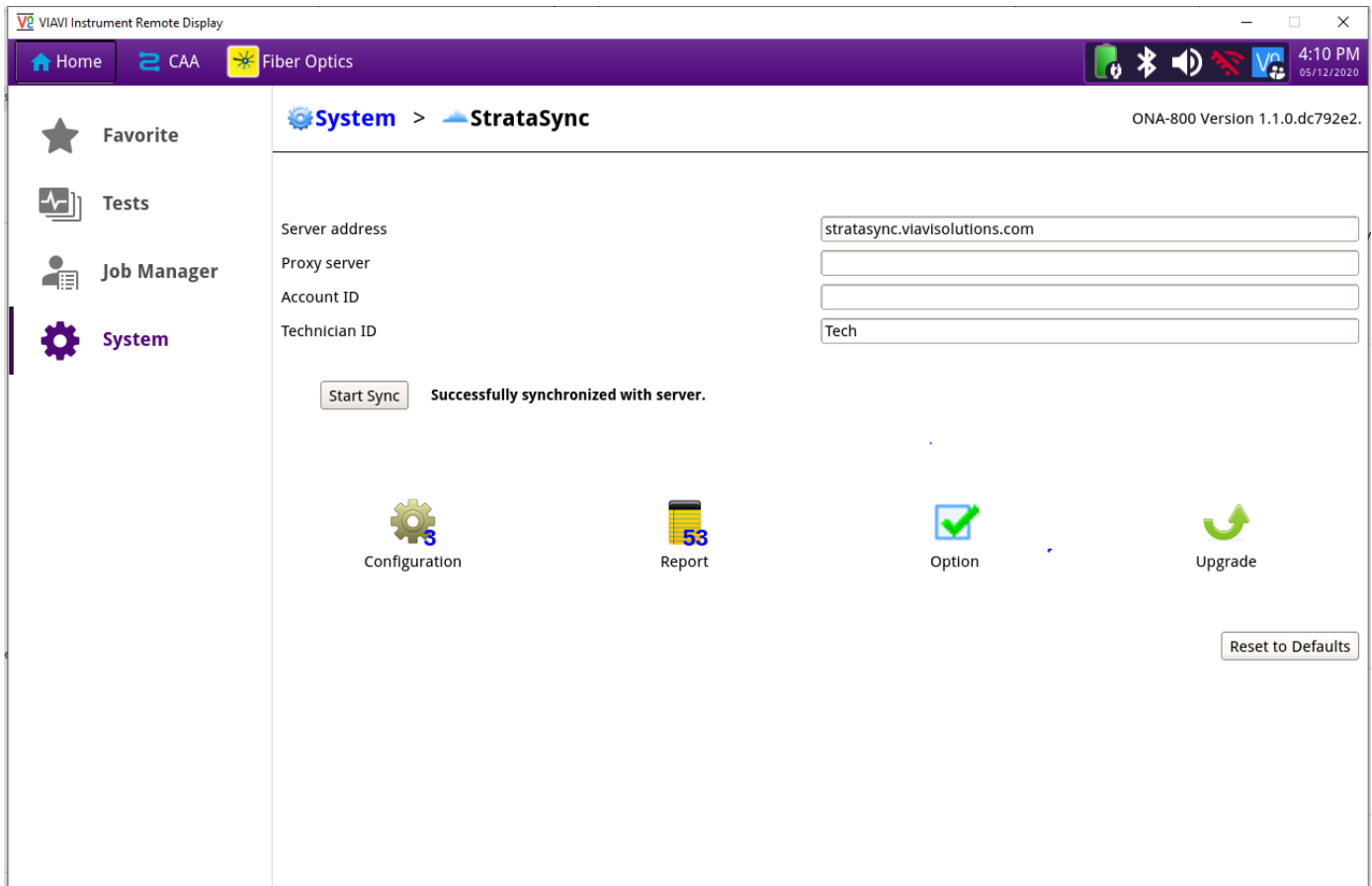
5. Network Settings Press the Network icon, , to display LAN Settings. Set **IP Mode** to “**DHCP**” for automatic IP address assignment or “**Static**” for manual input. If configuring a static address, be sure to include an accurate DNS address or the unit will fail to locate the StrataSync server.



After configuring LAN settings, press the System icon, , to redisplay the System Menu.



6. StrataSync Press the StrataSync icon, , to display StrataSync Settings. Ensure that **Account ID** and **Technician ID** match those of your StrataSync account.



7. Sync Press to sync your ONA-800 and initiate upgrades that have been assigned by your company's StrataSync Administrator.