

Brochure

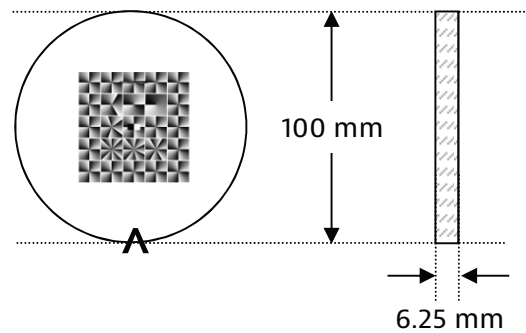
VIAVI

VPP-m589

Vortex Phase Plate

Properties	
Master	U13092E
Pattern dimension	~50 x 50
Vortex aperture	10 x 10 mm
Charge	Various
Phase depth tolerance	±3% (typ.)
Wavelength	589 nm
Material	Polymer replicated on glass substrate
Transmission spectrum	350-2000 nm
Temperature range	-150°C to 120°C
Defects	None

Part Dimensions



Caret mark (^) on substrate points to pattern side and locates the bottom of the vortex pattern

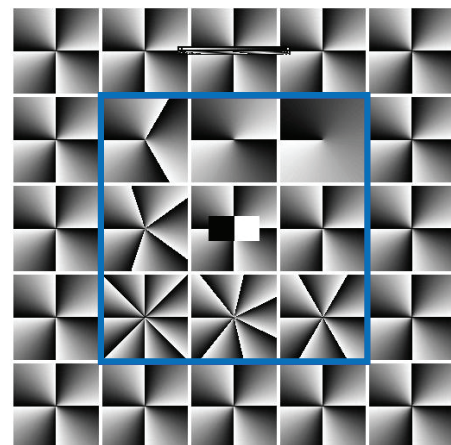
Charge Map

4	4	4	4	4
4	3	2	1	4
4	5		4	4
4	8	7	6	4
4	4	4	4	4



Pattern side up
Blue boundary indicates clear aperture

Vortex Geometry



Note on handling: As with any high-precision optical component, avoid touching the surface pattern and always use gloves when handling the phase plate.

osp.viavisolutions.com

Americas +1 800 254 3684
Europe +33 1 30 81 50 41
Asia Pacific +86 512 6956 7895
E-mail ospcustomerservice@viavisolutions.com

© 2023 VIAVI Solutions Inc.
Product specifications and descriptions in this document are subject to change without notice.
Patented as described at viavisolutions.com/patents/vpp-m589-vortexphaseplate-br-osp-nse-ae
30193922 900 1123