

How to cancel an active application on these platforms: MTS-2000/4000, ONA-800, SmartOTDR

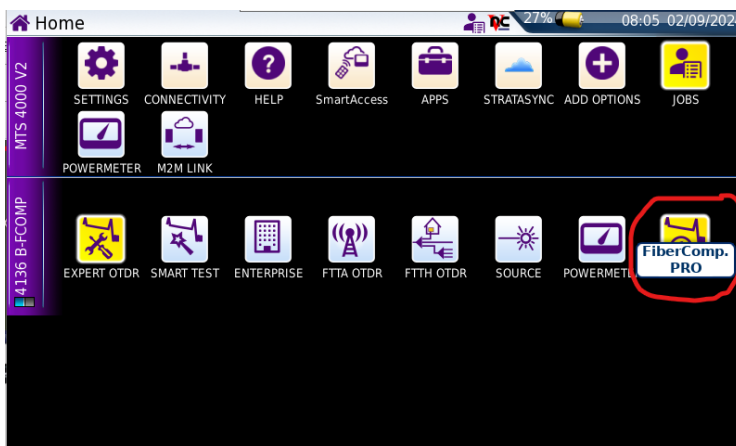
- A. In home screen: long-press the active application
- B. If the touch screen doesn't react, or in remote mode:

Described at the example of FiberComplete running on a MTS-4000V2:

- 1. Active application is open



- 2. Back in the home page, the above application is selected



- 3. Select „Cancel“ to de-activate the application. This is possible at the instruments soft- or hard button as well as remotely using VNC or SAA.

